

**AGENDA
REGULAR DRAINAGE MEETING**

Wednesday, December 9, 2020 9:30 AM

Due to Covid-19 health concerns, this meeting is open to the public via conference call only. The meeting date and time will remain the same. You may call at that time to access the meeting by following the instructions below:

To access the meeting call: 1-(312)-626-6799, when prompted enter meeting ID code: 820 7567 2007

**You can also access the meeting online at:
<https://us02web.zoom.us/j/82075672007>**

1. Open Meeting
2. Approve Agenda
3. Approve Minutes

Documents:

[12_02_20 - DRAINAGE MINUTES.PDF](#)
[DD 14 LANDOWNER MTG MINUTES 11_18_20.PDF](#)

4. Discuss W Possible Action - Hands On Completion
Contractor Hands On has submitted a letter detailing completion on projects in DD's Big 4, 41, 77, 123, and 143. Also included in the letter document is Pay Estimate Number 6.

Documents:

[HANDS ON COMPLETION LETTER 12_07_20.PDF](#)

5. Other Business
6. Adjourn Meeting

REGULAR DRAINAGE MEETING
Wednesday, December 2, 2020 9:30 AM

This meeting was held electronically and in-person due to Covid-19 concerns.

12/2/2020 - Minutes

1. Open Meeting

Hardin County Drainage Chairperson Lance Granzow opened the meeting. Also present were Trustee BJ Hoffman; Trustee Renee McClellan; Lee Gallentine of Clapsaddle- Garber Associates (CGA); Michael Pearce, Network Specialist; and Denise Smith, Drainage Clerk.

2. Approve Agenda

Motion by Hoffman to approve the agenda. Second by McClellan. All ayes. Motion carried.

3. Approve Minutes

Motion by Hoffman to approve the minutes of Drainage Meeting dated 11-25-20 and Drainage District 11 Landowner Meeting dated 11-18-20. Second by McClellan. All ayes. Motion carried.

DD 9 WO 229 - Pay Estimate Number 1	Gehrke Inc.	\$ 101,221.56
DD 55-3 WO 251 - Indemnification Agreement on Pond	The Davis Brown Law Firm	\$ 550.00

4. Approve Claims For Payment

Motion by McClellan to approve the claims for payment with pay date of Friday, December 4, 2020. Second by Hoffman. All ayes. Motion carried.

5. DD 55-3 WO 201 - Discuss W Possible Action - Investigation Summary

Gallentine stated this is on Lateral 12 of DD 55-3, this was a railroad issue, the blue dot on the map represents where we had restricted drainage under the railroad, there were a few trees in the railroad right of way, this was the work order that took us the longest time to get approval from the railroad to work in the right of way, this was to jet underneath the right of way and the railroad did allow us to jet under there. The contractor was out there a couple times jetting and a couple times televising, the end result is that we believe there are two tile that cross the railroad tracks. We are not 100% positive which one is the district tile as they are pretty close to the same elevation, but one we did manage to get through televising and it is flowing, there are some defects on it and the main one is that we have a joint that is offset where the cast iron pipe goes underneath the rails, where that cast iron pipe meets the clay tile is offset on the downstream side by a quarter pipe joint. Other than that there is not a whole lot wrong with it, it is flowing. Recommendations are that the trees that are out there are retreated to make sure they don't grow any more, there is cottonwood trees out there, on the west side and mulberry over on the east side, were cut down, there was a decent amount of roots in there but the tile is flowing. If you want to worry about the offset join you can, but at this point Gallentine does not know if it would be worth the cost, it would be well over \$50,000, you would have to put in a whole new crossing with a steel pipe and liner, you would have to offset the crossing by 150' because this is right where a culvert is, you would be doing a significant amount of costs for what you are doing.

Granzow asked about the offset, when you say it is a quarter off, is that quarter of the pipe or a quarter off the lip. Gallentine stated if you view the second to the last page, there is a photo. McClellan asked where this district is located. Gallentine stated it is between Radcliffe and Hubbard, so the offset shown in the photo, is offset so that the downstream pipe which is the clay tile is lower than the cast iron, so it is not obstructing flow, it is not like it has to hop up to get it downstream. It actually goes down, it is an 8" pipe so you are actually offset a couple inches. Granzow asked if there was any way we could dig to that and put a concrete collar on it. Gallentine stated he does not think so, the iron pipe is only 26' long so the ends of it would have to be pretty close to if not into the foreslope of the tracks, Gallentine does not know if the railroad would let you do that, but he can certainly ask. Granzow wondered if a sinkhole would form there. McClellan stated she would leave it as is for now. Granzow agreed. Gallentine stated the other image shows the other side of the pipe that goes from the clay to the cast iron and those pipes line up just fine. Granzow stated he is fine with it. Gallentine stated the contractor, Adam Seward, has been out there once and done some treating on the stumps, we don't know if he fully killed them though, we would recommend he go out there and retreat the stumps, and do them again now or in the spring and check them again 6 months later, to try and make sure we get the trees killed. McClellan asked for clarification on the tree roots in the images. Gallentine stated those are the roots remaining after the tile was jet cleaned.

Motion by Hoffman to utilize Gallentine recommendation on the tree issue on DD 55-3 Work Order 201 as presented. Second by McClellan.

Smith asked if the Trustees would like Gallentine to contact the contractor or would you like me to do that. Hoffman stated the Clerk should contact the contractor. Smith asked if the Trustees would like the trees cut or just treated, Granzow stated if Seward is allowed to cut the trees in the railroad right of way, we would like them cut, if Seward is not allowed to cut them in the railroad right of way, we would just like to treat the trees. Hoffman stated have Seward drill them and treat them then.

Gallentine noted one other thing and referenced the photos, there is a piece of this tile that has been replaced with single wall tile at one time, you can see it is starting to deform slightly that may lead to a premature failure, Gallentine is not sure if the Trustees want to do anything with it now or wait until it fails, Gallentine stated he is not sure how single wall tile got put in there, we just found it that way. Granzow asked if the single wall tile was in the railroad right of way as well. Gallentine stated it is pretty much outside of the railroad right of way but it would be right on the edge of the right of way. Granzow stated to take note if it and if we have to go back in we would take note of it in that spot. Gallentine stated he is not completely sure if the contractor got all of the holes filled back in but Jerry Hindman called in and stated they hadn't been, you would probably want the Clerk to check in with Seward to see if he filled those in or if Hindman needs to. Smith stated she can do that.

All ayes. Motion carried.

6. Other Business

Smith stated the Trustees had directed her to reach out to Mike Richards for dates of availability on the DD 55-3 Lat 9 pond on Scott Thompson's property, Richards has gotten back to us with dates of availability to meet with us, Thompson and possibly Thompson's attorney. Richards dates of availability are December 23, 20, or January 6th, January 13 or January 27th, 2021. Smith stated you had indicated you would like a brief closed session with Richards before our meeting with Thompson. Hoffman stated he does not want to push this off, but we are not going to move any dirt or anything, and knowing we need to make sure we are readily available for the transition in the Auditor's office, Hoffman would like to push this off until later in January. Granzow asked for the dates in January, Smith stated January 6th, January 13th or January 27th. Hoffman stated January 27th would be his preference. Granzow stated that was fine. Smith asked if the Trustees had a time preference. Granzow stated whatever would fit into our calendar on that date. Smith asked if the Trustees would like an 11:00 am meeting, Hoffman stated that would be ideal, and we can keep the Drainage Meeting at 9:30 following the regular Board of Supervisors meeting. Smith asked if the Trustees would like a few brief minutes with Richards first and have Thompson in at 11:15. Granzow stated he would like 10 to 15 minutes with Richards, McClellan agreed. Hoffman stated we could just have a closed session and then bring in Thompson when we are ready, if we have to have two closed sessions, the first being one for us for legal strategy and the second closed session for dealing with Thompson, Hoffman asked would the meeting with Thompson have to be in closed session. Hoffman asked if I was another land owner in that district wouldn't I be entitled to be engaged in that discussion. Granzow stated he did not think the meeting with Thompson would be in closed session unless in the meeting we are talking about money, real estate, funding or buying/purchasing. Hoffman stated the only closed session we really need is legal strategy prior to meeting with Thompson, 11:00 would work then we could meet with Thompson immediately following.

Private Trustee Elections - Smith stated she is preparing packets for Private Trustee elections, that date for the 2021 election will be Saturday, January 16, 2021, then we will need to canvass the following Tuesday, as the Monday following January 16th is Martin Luther King Jr. Day, and Smith thought we were closed, so we will shoot for Tuesday, January 19th for Canvass of the Trustee Election, Smith stated she will get those packets out in the mail this week.

DD 167 - Gallentine updated that Adam Seward is working down on DD 167 on a work order submitted by David Bernard, that has been around for a little while longer because it is replacement of 100' of tile and repair of some sinkholes/ blowouts. Gallentine stated it seems that the work is going fine but that a few of the blowouts may not need repairs, it appears that after they have done some cultivation in the field they have sealed themselves back over. Gallentine stated that when we found them they were more of a pressure situation, not necessarily collapses, maybe they won't need fixed at all.

7. Adjourn Meeting

Motion by McClellan to adjourn. Second by Hoffman. All ayes. Motion carried.

**DD 14 LANDOWNERS MEETING
WEDNESDAY, NOVEMBER 18, 2020 12:00 PM**

This meeting was held electronically and in-person due to Covid-19 concerns.

11/18/2020 - Minutes

1. Open Meeting

Hardin County Drainage Trustee BJ Hoffman opened the meeting. Also present were Trustee Renee McClellan; Landowners Jack Runge, Ron Vierkandt, Jim Smuck; Lee Gallentine of Clapsaddle-Garber Associates (CGA); Angela Silvey, Board Secretary; Michael Pearce, Network Specialist; and Denise Smith, Drainage Clerk.

2. Approve Agenda

Motion by McClellan to approve the agenda. Second by Hoffman. All ayes. Motion carried.

3. Introductions/Attendance

Introductions were made and attendance verified.

4. DD 14 WO 290 - Explanation Of Investigation Summary

Gallentine stated this work order was reported by Dave Sweeney on land owned by Cynthia Ioger, there are 4 sinkholes on their property they asked CGA to go out and look at, which CGA did. Gallentine noted this area has a history of sinkholes, we had quite a few the last few years, we have had four or five in the last five years, and it seems like we are going out there every year, or every other year for this type of sinkhole. There were 4 sinkholes, and we ended up televising about 880' upstream and about 1,000' downstream, what we found were 26 locations where the tile was either partially or imminently collapsed, Gallentine referenced photos of some of the locations. The photos show the top of the tile is starting to cave down, it is cracked at the top, the sides and the bottom. You can see dirt starting to show through that crack, and at the next joint down you can see a corn stalk in the crack so it is evidently starting to suck some dirt down into the tile. Vierkandt asked where this was located. Gallentine stated this image is 450' downstream to the south, Vierkandt asked if it was from the last sinkhole, Gallentine stated yes. Next image shows a previous repair with corrugated metal that is pretty rusty, so at this point you can see that the coating is gone on the inside, so it is just an amount of time before that rusts through, Gallentine can't say how long that would take to rust through, it depends on the metal thickness, but with modern pipe that wouldn't take very long as it is not very thick. If it was an old pipe, it may take longer as they are thicker. Vierkandt stated this is a new one, and asked if this is under D41. Gallentine stated no not yet. The next image shows a crack at the top, and the tile is starting to vee down some, this image is about 600' downstream. The next image shows at 840' downstream, as the top of the tile has some crazing and random spiderweb type cracks at the top, it could be just the coating is cracked or it could be something deeper, it is hard to say, it indicates the age is starting to show. The next photo from 130' upstream shows the tile is cracked at the 11:00 position and dirt is starting to show through, the next image at 240' upstream, shows a piece of tile that has fallen out of the top of the tile and flowed downstream a ways, it is beginning to damn up and to trap debris and cornstalks and restrict drainage. The next image shows one that is not far from falling in and the sides have totally squatted out and the top has squatted down and you can see some cornstalks above it. Next image at 516' shows it is not quite as bad but is veering down. Gallentine stated those photos kind of give you a range of condition from 800' downstream to 500' upstream, some are close enough together that you could do a spot repair and combine them together, so we would recommend if you wanted to do spot repairs just on what we televised, you would end up doing six spot repairs, that consist of 570' and we are thinking the costs would consist of \$35,000 to \$45,000. If you wanted to repair the whole length of tile that we televised, you would be looking at costs over \$50,000 and you would have to have an Engineer's Report and we would have to have a hearing, and Gallentine has no idea what the condition is outside of the 1,900' we televised.

Gallentine stated it is all buttoned up and closed up as far as putting something in there temporarily, and televising is complete, we are here today so we can see what people want to do and what the desire is to spend and that is why we are having a landowners meeting. Gallentine stated this is more severe than the issues we just saw in the DD 11 district meeting we just held, but this is a smaller district too. Gallentine asked for questions. Ron Vierkandt asked how far are we from where this hooks into the big tile down at the bottom. Gallentine asked if it was in Vierkandt's ground that we hooked into that big tile. Vierkandt replied that no, that was in Strothcamp's ground. Gallentine stated this was in Cynthia Ioger's land, and asked if Runge knew where that hooked in. Vierkandt stated it may be in Jeff Strothcamp's. Runge stated Ioger's is right north of Strothcamp's where it hooked into the big tile. Gallentine stated it would be north and east, and we went a little bit past Ioger's west property line by a couple hundred feet. Gallentine referenced the map, and stated we almost went all the way down here past the property line, Vierkandt stated he can't be sure but this is Merle and Jeff Strothcamp's, which are farmed together, Runge agreed and noted they have a split 80 acre parcel, Merle has the north and Jeff has the south 40 next to Ron

Vierkandt's. Vierkandt stated we would be close to that big tile, Gallentine stated as he looks at the map we are within a couple hundred feet of the big tile. Gallentine stated that tile work that was done a few years ago was on DD 123. Vierkandt agreed.

Gallentine stated this would be at the lower end of the existing district. Vierkandt stated we don't want to put a patch in the middle, what good is that 20 years down the road, and it was mentioned there was not enough dirt over the top. Gallentine stated there were some places that were light in cover, and lacking cover in that waterway. Vierkandt stated if we need to make enough depth to keep cover on this we need to start down there at the bottom, if that is where you are televising anyway, it looks to Vierkandt it makes sense to hook on and get new depth, is that what Gallentine would consider repair. Gallentine stated as long as we don't increase the size of the tile, then we can go deeper, if we start increasing the size of the tile then we are looking at an improvement. Gallentine knows back when we put that other big tile in, there are some wet ones in here, and maybe Runge had some wet areas back in that time, NRCS really didn't say a whole lot because we have this restriction between that wetland and this new tile project. Runge stated his was straightened out thanks to Gallentine and were reclassified and are only at .2% of an acre, Gallentine stated it must have been reduced, as that may be too much even in his mind on that one.

Gallentine stated we are at the point of just looking at it, the tile is flowing, we have been out there multiple times in the past and there are definite marks of previous repair. Vierkandt stated there is so much fall there, that is not the problem, the question is how big is that tile. Vierkandt stated he thought it was 14" up at D41. Gallentine stated we measured it at the flow-out, it was anywhere from 14" to 15" tall and anywhere from 15" to 18" wide, because it was squatted down. Gallentine stated it was probably a 15" tile originally. Vierkandt asked if Gallentine could remember what they hooked into with down there on the other project, we hooked into both the old and the new tile, it came up how many feet. Gallentine stated he did not know without looking at the files or old map, it has been too many drainage projects ago. Vierkandt asked with the acreage we have in there, is a 15" tile adequate. Gallentine stated probably not if you want a 1/2" per day coefficient, based on the fact that they were designed for an 1/8" to 1/4" per day drainage coefficient, just to drain the potholes and that was it.

Vierkandt stated he listened to that last meeting and could see that he wasn't getting too much for repair dollars, but Vierkandt would be against putting 500' of 14" tile back in at that grade, and if we start in the middle and come up here, you can't go down, we have to start at the bottom. Gallentine stated if we replace 500', wherever we put that in at you are pretty much locked in that for the next 50 to 100 years, so it is good to have these meetings to figure out if that is what the district wants to do and how are we going approach it. Vierkandt stated we know what our depth is at the bottom, we have to start there and bring the grade up, it depends on how many dollars we want to spend. Gallentine stated it is just you three here, so that is the input we have, Vierkandt was surprised Loger's did not have a representative here, Vierkandt asked what Runge thought. Runge stated that goes in on Jeff Strothcamp's, and asked if the sinkholes were on Sweeney's or on Strothcamp's. Gallentine stated the sinkholes were on Sweeney's we just televised under the fence onto Strothcamp's. Runge stated that tile on Sweeney's is super deep, Runge used to farm that and he remembered looking into a couple of those holes, Runge was just questioning where the cover issue is, is it clear down on the fence-line with Sweeney's or is it on Strothcamp's. Runge stated he and Vierkandt were down there an intervened in the hook up process for the new and old tile, there was plenty of cover down there as it was a manhole cover where the connection was made. Gallentine stated if there is cover issues, it is spotty here and there in the waterway, it is not a widespread issue. Vierkandt stated he does not want to put in \$35,000 of tile up here when he should be down, and the only way he can get down is to go back down and start at the outlet. Gallentine stated he understands, if you don't have an outlet, you don't have anything.

Runge asked what Vierkandt was proposing, to do the whole bottom end. Vierkandt stated if we want to spend \$35,000, we want to start at the end and hook up to the new, and go till our \$35,000 is gone, at least we got that right, and then if we stop and have some blow outs, we may be back here in 3 to 5 years, and then we can put another \$35,000 in and go up farther, without going through a huge process, we really don't want to do that if we don't have to. Vierkandt stated with as much fall as we can get with a 15" tile, that takes a lot of water. Gallentine stated if we want to gain depth, we will have to cut back on some of that fall also. Vierkandt stated but we don't have to cut back on that fall if we start at the bottom. Gallentine stated you guys are right and have been through a lot of these meetings, the steeper the pipe the more capacity you have got. Vierkandt stated he read there wasn't much cover, Gallentine will have to look back through it, Vierkandt stated if we look at the first 80 acres he has there it is kind of shallow, but if we start at the bottom, and we get ourselves a new grade here, we have got something to work with, but if we patch in this 500' right in the middle, Vierkandt is against that. Gallentine stated if you do that 500' you are locked into that for the next 50 to 100 years, Vierkandt stated he does not want to be locked into that, but his kids would be locked in.

Gallentine asked if there were any other questions for him, if not he would turn it over to Hoffman for discussion. McClellan asked if you are talking about starting from the bottom up to replace, is that correct. Vierkandt stated yes, just to replace as that is all we are allowed to do. McClellan asked if we need to go in to fix the sinkholes

though. Gallentine stated they have already been fixed. Hoffman stated we just spot fixed because we didn't want to hit that threshold for a hearing. Vierkandt stated let's do 500'. Hoffman asked where does Vierkandt want that 500' to start. Vierkandt stated right at the new tile outlet, Hoffman wanted to make sure he was clear. Vierkandt stated let's start there and if 5 years down the road we have more sinkhole troubles, let's put in another 500', whatever makes people happy at that price. Gallentine stated it is kind of a compromise between fix as you go and a full replacement. Hoffman stated we have to juggle the legal concept of supplanting the \$50,000 hearing threshold, if we cross that. Vierkandt does not want to cross that threshold. Hoffman stated we need to be good stewards of the district's time and money getting up to that, so let's say hypothetically, we get 385' and your \$50,000 is gone, do we stop. Vierkandt stated in the letter we received it stated it was estimated we could replace 500' for \$30,000 to \$40,000. Hoffman stated if we get in the field and run into sand pockets or problems, Hoffman wants to have an honest discussion so if we don't get to that 500', you are not mad at the Trustees, Engineer or the contractor. Vierkandt stated he will understand that as he is more in favor to start at the bottom to get the new depth. McClellan states we almost have to, you can't start in the middle and expect to gain depth. Vierkandt stated he would completely understand, Vierkandt asked if Runge was ok with that. Runge stated yes, we could start at the bottom and spend \$35,000 and then address any other issues as a fix as fail. Gallentine stated you could probably do 500' for \$50,000, even if you ran into a couple of unforeseen things, Gallentine stated that may not cover every possibility. Vierkandt asked if we just went from \$35,000 to \$50,000, Hoffman stated no his example was just let's just say we get so many feet up and we are out of money. Gallentine stated he thought we could do 570' for \$35,000 to \$45,000. Smuck stated if we can get the volume of water that we have been getting or better, we should be able to, because we will have the depth, we are hooking right into the new tile and we are hooked into both of the parallel tile, not just one, Smuck stated he was there when we did it, the outlet is there, so our outlet is better than we ever had before, Gallentine stated because you are hooked to both, you are not restricted to one or the other, that is better than some of the connections out west that were just hooked to one or the other.

Runge stated they were down there when they did this one, Gallentine asked if Gehrke did this one. Runge stated that Bob Gehrke did this one. Runge stated they were going to do a tee entrance into the manhole, and when we talked to Bob Gehrke, Gehrke stated that won't work either, the turbulence will just decrease the flow on both tiles, Runge stated we did get that in at a 45 degree angle, Gallentine stated that will help, whenever you get that ninety degree angle, water doesn't turn that way. Runge stated there is a manhole down there, we just need to dig the top off it and look at it. Vierkandt stated the manhole ended up being just downstream. Runge stated the manhole is on the new tile and they did a jumper over to the old tile. Smith interjected that the only other communication she had received was from Merle Strothcamp who had called Smith twice, in his first phone call, Strothcamp stated he was just interested in repairing as needed, Smith talked to Strothcamp a second time and he stated he would go with whatever the majority of the landowners want to do. Smith stated she thought Strothcamp will probably side with whatever the prevailing opinion is. Runge stated that Jeff Strothcamp is doing a lot of the work on Merle Strothcamp's ground, Runge will take with Jeff and see what he thinks also. Vierkandt stated they do not have any dollars involved in this, we should get equal vote in this. Hoffman stated you don't get any vote in this. Gallentine stated the district Trustees make the deciding votes on this, and at any point the Drainage Clerk can provide you the documentation to become an owner Trustee managed district. Hoffman stated he offers this to every district, the point of this is that if we had a room full of 40 people today, we would hand out a ballot and the landowners can cast a ballot, and Hoffman does not recall a time where we have not gone with the popular vote of the landowners. Hoffman stated yes, you do have a voice although you don't have a vote formally, but if we had a bunch of people here, we would allow you to cast a ballot and go with the popular vote, it is your district and you money.

McClellan stated to recap, the potholes are fixed, you need a motion. Gallentine stated that his understanding is we are going to start at the newly installed tile from DD 123 and go upstream until the money is gone. Runge stated we will go until the \$35,000 is gone to stay under the \$50,000 with some contingencies. Vierkandt stated he and Runge are the major landowners in the district with the costs being nearly 50-50 split between them. Gallentine asked, if the \$35,000, is that construction and engineering, does that include just construction or construction and engineering minus what we are already up tot today. Vierkandt questioned why we have to have an engineer, why do we have to pay the engineer, with the GPS and lasers we have now, he presumes we will throw the old tile up on the bank. Gallentine stated typically what we do is the old tile goes off-site somewhere. Vierkandt stated why do we need the engineer with the grade we have and lasers now. Gallentine stated you were involved in the projects west of Buckeye and that one went sideways even with an engineer, when things go wrong, they just go wrong, Gallentine serves at the Trustees discretion they tell him where he is involved and where he isn't. Vierkandt asked Runge what he thought about paying an Engineer. Runge stated he does not understand why we would have to have an engineer on this, we have a tremendous amount of fall, and we will have depth coming out of the bottom, you are going right up the same tile line, we are not worried about flow coefficients and inches per day, we just want a better outlet down there, Runge understands what is going on west of town, Runge was not involved in it but has heard a lot about it, the other one getting into Buckeye, he understands why we need engineering there but does not understand why we need an engineer to replace 500' feet of tile or \$35,000 worth of tile, Runge would hate to see \$15,000 to \$17,000 of the \$35,000 be spent on engineering. Hoffman interjected that while it might not take a great deal of engineering that part of those engineering or ancillary costs are to have a construction observer from CGA on-site during construction to shoot the GPS points while the contractor is out there to accurately mark those locations going forward. Vierkandt asked

if that was CGA's man, Hoffman stated it was, and asked if you would be ok with having those locations marked by the observer and to make sure that the contractor is doing everything by specs and creating an accurate record. Vierkandt stated yes, Runge stated he guessed he would go with that. Hoffman stated he learned early on in his tenure how important this was, Gallentine stated he is just asking the question so we are on the same page before we start. Runge stated CGA has one good man, Dean, who gets right in there and grab a spade.

Vierkandt asked what kind of tile are we talking about. Gallentine stated if he was doing any kind of bidding with contractors he would get a price for both, he would get a price for plastic with rock bedding and he would get a price for concrete. Veirkandt asked what Runge thought, Runge stated he was sure happy to work with plastic if it is not cost prohibitive to work with, it is simpler to work with, and just not going to have the blowout and breakdown issues with plastic, maybe 100 years from now someone will say why did they go with plastic and not put concrete in. Runge asked generally what is the cost difference between plastic and concrete. Gallentine stated they are usually pretty comparable if you go plastic with rock bedding versus concrete, but from what he is hearing from contractors is that if you are getting prices on both, the material price may change as much as 50% because one supplier wants to get the job over the other. Hoffman stated we have also gone down the route of spooning in concrete, and that takes some of the cost out. Gallentine stated we have not done any spooning with plastic since the problems west of Buckeye. Vierkandt stated he watched them spoon plastic west of Buckeye and was well satisfied as he watched them do a little bit. Gallentine stated that was McDowell's and that was the last time we did it. Vierkandt stated it was Gehrke that did it in Section 27 and that was a year or two later when we decided the first one didn't work, and that one didn't, they really messed it up.

Hoffman stated to get things moving today, not to hurry the process today, and asked if McClellan wanted to catch up Trustee Granzow on this first or are you ready to do something today, Hoffman stated he is ready today to do something, we are getting the input we need. Vierkandt stated he kind of disagreed with Runge west of Buckeye after his experience with plastic, he is leaning more and more to concrete. Hoffman stated we can bid it both ways, Vierkandt understands that. Hoffman stated the other part of the process is do we want to put this in the contractor lottery system. Gallentine stated it is low enough in cost that you wouldn't have to have a formal bid letting, you could do a small bid packet, like a copy of the original profile and a copy of the map and send it to the in county contractors and say how much is this going to cost, and get prices on both concrete and plastic. Gallentine stated as of late Gehrke will bid plastic but they really don't like putting plastic in on district projects, they will put in plastic on private tile, but they really are leaning towards concrete over plastic on big drainage district projects. Vierkandt stated there is a size difference here, if we put in an 8" or even a 10" tile, 8" is even easier because it rolls and it sticks but the cost to lay it is small, but this Vierkandt leans toward concrete. Runge does not have a problem going to concrete. Gallentine stated maybe we don't want to say how much is it going to cost to replace 500', maybe we want to say to the contractor how much can you replace for this dollar amount or a price per foot. Hoffman stated maybe how per foot fully installed, let's see how much bang we can get for your buck. Hoffman stated they have every right to say how much to go out and do this they may give you a heck of a deal.

Vierkandt stated we do want to include in the bid that we do want deeper grade and if you can, get cover, we don't want to stay in the same ditch, the better grade that we can get. Gallentine stated you want it lower than your current slope, Vierkandt stated that was correct, that is why he wanted to start at the bottom. Gallentine understood that. McClellan stated you will have to have some kind of engineering to know what to send out to contractors with the bid, Gallentine stated yes, but we are not going to draw up plans or specs, we will take the original map or profile or how many feet we can get replaced for so many dollars and we are going to lower this from the current depth by so many feet. Gallentine will look at the original plans and you will have some kind of engineering costs but it will not be the full blown cost with plans, publications and all that, it will be open to in county contractors unless you want to entertain an out of county contractors, Gallentine just needs to know what that dollar amount is, and asked is it \$35,000. Runge stated let's start there, Gallentine stated and you want observation, Vierkandt stated if we are 50' from a place where you are getting blowouts, then go that 50', you can come talk to Runge or myself. Hoffman stated we will have to be the ones that make that decision, CGA will have to come back to us, as long as the landowners here today are ok with coming back in and seeing the Trustees again, Hoffman is fine with that,

Gallentine asked you do want us out there though during construction, Vierkandt stated he would like Dean from CGA present. Gallentine asked if that \$35,000 included the contractor and construction observer Dean, is that correct. Hoffman stated we would have to work some math backwards to figure the cost of the construction observer. Gallentine stated he can figure what the cost of the construction observer would be and figure what that leaves us to work with the contractor. Vierkandt stated that Dean does a good job. Hoffman stated for today he needs a motion for Gallentine to start working on the bid, and once Gallentine has the bid package ready, he will send that out to contractors, and see if we can put a quick turnaround on the bid. Gallentine stated once we put that out, we will request the contractor have the bids back in a couple of weeks. Hoffman stated he would ask for a motion.

5. DD 14 WO 291 - Discuss W Possible Action - Investigation Summary

Smith asked if the Trustees would like to have any discussion on the two private tiles that had been inserted into the main tile, this was the only remaining item on the agenda for discussion. McClellan stated we should discuss this. Gallentine stated this was on Runge's field, done in the north end of the field, this was what ended up being discovered, two private tiles connections were found on the district tile that were straight across from each other, there was some debris caught in the tiles as they protruded into district tile too far creating an obstruction, we found debris and pop cans stuck in it. Gallentine stated that was what was causing the issue in the north end. Vierkandt stated so we instead of a cribbed connection, this needs to be repaired. Gallentine stated this has been repaired, they fixed it while the contractor was out there. Hoffman stated this is resolved. Vierkandt stated he feels he should almost be the one to pay for that, as he hired the contractor to do that 8 to 10 years ago. McClellan stated that has been discussed, Vierkandt had no idea this was done that way. Hoffman stated that this has been repaired. Gallentine stated yes it has been repaired, they offset the private tiles so the flows don't cross each other and put in factory tees, it looks good. Vierkandt stated they did a good job on the repair, he was satisfied with it. Hoffman thanked Smith for the reminder, Smith thanked Hoffman for covering it, that was all she had remaining on the agenda.

6. Comments/Discussion

7. Possible Action

On DD 14 Work Order 290, McClellan motioned to have CGA prepare a bid packet and send the bid packet out to in county contractors.

In additional discussion on the motion, Gallentine stated in county contractors would include: Hands On, McDowell, Gehrke, Honey Creek Land Improvement, and Williams Excavation. Vierkandt stated he was not familiar with Honey Creek, Gallentine stated he is from the southern part of the county, Runge pointed out that Honey Creek had recently done work near Vierkandt's corner. Gallentine stated he would send it out to all in county contractors to make sure we and they get a fair deal on that.

Second by Hoffman. All ayes. Motion carried.

8. Other Business

IRUA - Gallentine stated the IRUA recently crossed district tile and while we were out on the same project, we probed their water main where it crosses the district tile, per the permit they applied for the IRUA was supposed to clear that tile by a foot. They only cleared it by half a foot, Gallentine does not know what action the Trustees want to take, as there have been other issues with the IRUA in other districts, if it is a concern or not, it may not be a concern until we keep deepening the replacement of tile discussed today, until we get up to the point of their crossing, and all of a sudden there is a water main where that tile is supposed to be. Vierkandt thought the tile was deeper than the rural water line. Gallentine stated IRUA was under district tile, but they only cleared it by half a foot. Gallentine stated he wanted the Trustees to be aware of it and will proceed however they would like. Runge asked if that was what was being flagged down on the corner. Gallentine stated he did not know what they were flagging on the corner for, but it was not for CGA. Hoffman stated to give the Drainage Clerk a call and let her know, if they are flagging something we have not had any permits come in for up there, hopefully it is not an ask for forgiveness rather than permission situation again. Runge stated USIG was down there this morning doing locate. Vierkandt asked if that was on D41 and S27. Runge said yes, there was a Hardin County flags and white flags along the road going both ways. Gallentine stated there was a little sinkhole over the culvert there, maybe the County has come in to fix that, we would have reported it if they were there when we were. Vierkandt stated that was 2 miles east down there on D41. Gallentine stated no Dean found this one, there was one there that Honey Creek repaired. Gallentine just wanted to let the Trustees know about IRUA's crossing, as far as we know that did not hit the district tile.

9. Adjourn Meeting

Motion by McClellan to adjourn. Second by Hoffman. All ayes. Motion carried.



December 7, 2020

Drainage District Trustees
1215 Edgington Ave, Suite 1
Eldora, IA 50627

RE: Repairs to Big 4, DD 41, DD 77, DD 123, and DD 143
Project Completion Letter

Dear Trustees:

Hand On Excavating has completed the work required by the plans and specifications of the above referenced projects including removals, replacements, and repairs as shown/included on the attached as-built plan sheets and Pay Estimate No. 6. Also attached for your file are copies of the lien waivers from suppliers and subcontractors that Hands On submitted to us.

To the best of my knowledge, Hands On has completed their work on the above referenced projects in general accordance with the plans, specifications, Change Orders, District Trustees direction, and field instructions. The majority of this is documented in the construction observation report and pictures books what we have generated (to be transmitted under a separate cover). Therefore, I recommend that the Drainage District contact landowners where the construction occurred to verify whether they have any damage claims to be filed. Barring none, I recommend that the District Trustees accept their portion of the above referenced projects as complete and authorize final payment (including release of retainage) to the Contractor in the amount of \$15,266.03 per the attached final pay estimate. Also, please note that the only remaining project on the contract with Hands On is DD 128, which we are currently working on finalizing also.

If you have any questions with regards to the items in this letter, please contact me by phone at 641-847-3273 or by email at LGallentine@cgaconsultants.com.

Sincerely,

A handwritten signature in blue ink, appearing to read "Lee Gallentine".

Lee Gallentine, PE & PLS
Clapsaddle-Garber Associates

Clapsaddle-Garber Associates, Inc.

739 Park Avenue • Ackley, Iowa 50601 • Telephone 641-847-3273 • Fax 641-847-2303

www.cgaconsultants.com

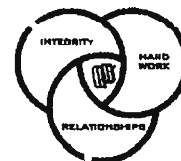


RECEIPT AND WAIVER OF LIEN

TO WHOM IT MAY CONCERN:

This is to certify that product purchased from Prinsco, Inc, sold to Hands On Excavating been paid in full, and the material is free and clear of any liens or encumbrances by Prinsco Inc, as of April 1, 2020.

LeAnn Nord
Prinsco Inc
FPA



UNCONDITIONAL WAIVER AND RELEASE UPON PAYMENT

TO WHOM IT MAY CONERN:

Whereas the undersigned WILLIAMS UNDERGROUND

has been paid and has received payment in full for labor, services, equipment and/or material furnished to Hands On Excavating LLC for the job know as HARDIN COUNTY DRAINAGE DISTRICTS THROUGH 4/1/2020 located in the city/county of HARDIN COUNTY, State of Iowa.

The undersigned does hereby release any right to lien on the above referenced job to the following extent. This release covers a complete payment for labor, services, equipment or materials furnished through the date signed below, and does not cover items furnished after this date.

Dated this 19th day of September, 2020

Company: WILLIAMS UNDERGROUND

By: Paul C. Bell
(Signature)

****Lien Waivers need to be returned before next payment will be processed****

Please Return to:
Hands On Excavating LLC
3305 Ziegler Ave
Radcliffe, IA 50230

UNCONDITIONAL WAIVER AND RELEASE UPON PAYMENT

TO WHOM IT MAY CONERN:

Whereas the undersigned FORTERRA PIPE & PRECAST

has been paid and has received payment in full for labor, services, equipment and/or material furnished to Hands On Excavating LLC for the job know as HARDIN COUNTY DRAINAGE DISTRICTS THROUGH 4/1/2020 located in the city/county of HARDIN COUNTY, State of Iowa.

The undersigned does hereby release any right to lien on the above referenced job to the following extent. This release covers a complete payment for labor, services, equipment or materials furnished through the date signed below, and does not cover items furnished after this date.

Dated this 1ST day of APRIL, 2020

Company:

Forterra

By:

(Signature)

[Handwritten Signature]

****Lien Waivers need to be returned before next payment will be processed****

**Please Return to:
Hands On Excavating LLC
3305 Ziegler Ave
Radcliffe, IA 50230**

UNCONDITIONAL WAIVER AND RELEASE UPON PAYMENT

TO WHOM IT MAY CONCERN:

Whereas the undersigned Martin Maietta
has been paid and has received payment in full for labor, services, equipment and/or material furnished
to Hands On Excavating LLC for the job know as Hardin County Drainage Districts
located in the city/county of Hardin
, State of Iowa.

The undersigned does hereby release any right to lien on the above referenced job to the following
extent. This release covers a complete payment for labor, services, equipment or materials furnished
through the date signed below, and does not cover items furnished after this date.

Dated this 6th day of October, 2020

Company: Martin Maietta

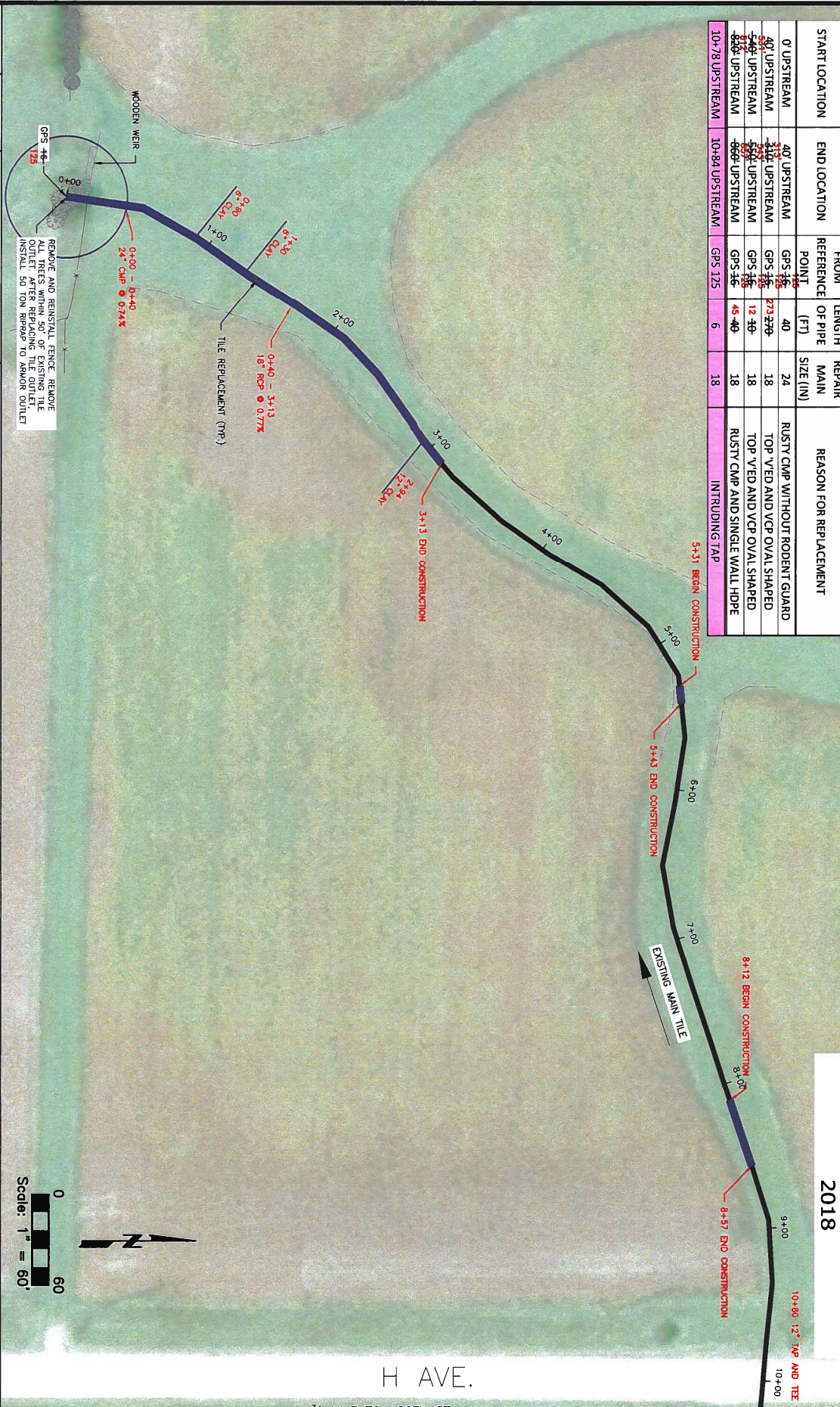
By: [Signature]
(Signature)

****Lien Waivers need to be returned before next payment will be processed****

Please Return to:
Hands On Excavating LLC
3305 Ziegler Ave
Radcliffe, IA 50230

REPLACEMENT SCHEDULE

START LOCATION	END LOCATION	FROM POINT	LENGTH OF PIPE (FT)	REPAIR MAIN SIZE (IN)	REASON FOR REPLACEMENT
0' UPSTREAM	40' UPSTREAM	GPS 125	40	24	RUSTY CMP WITHOUT RODENT GUARD
40' UPSTREAM	112' UPSTREAM	GPS 125	72	18	TOP VED AND VCP OVAL SHAPED
112' UPSTREAM	273' UPSTREAM	GPS 125	161	18	TOP VED AND VCP OVAL SHAPED
273' UPSTREAM	558' UPSTREAM	GPS 125	285	18	RUSTY CMP AND SINGLE WALL HDPE
558' UPSTREAM	866' UPSTREAM	GPS 125	308	18	RUSTY CMP AND SINGLE WALL HDPE
866' UPSTREAM	10+78 UPSTREAM	GPS 125	212	18	RUSTY CMP AND SINGLE WALL HDPE
10+78 UPSTREAM	10+84 UPSTREAM	GPS 125	6	18	INTRUDING TAP

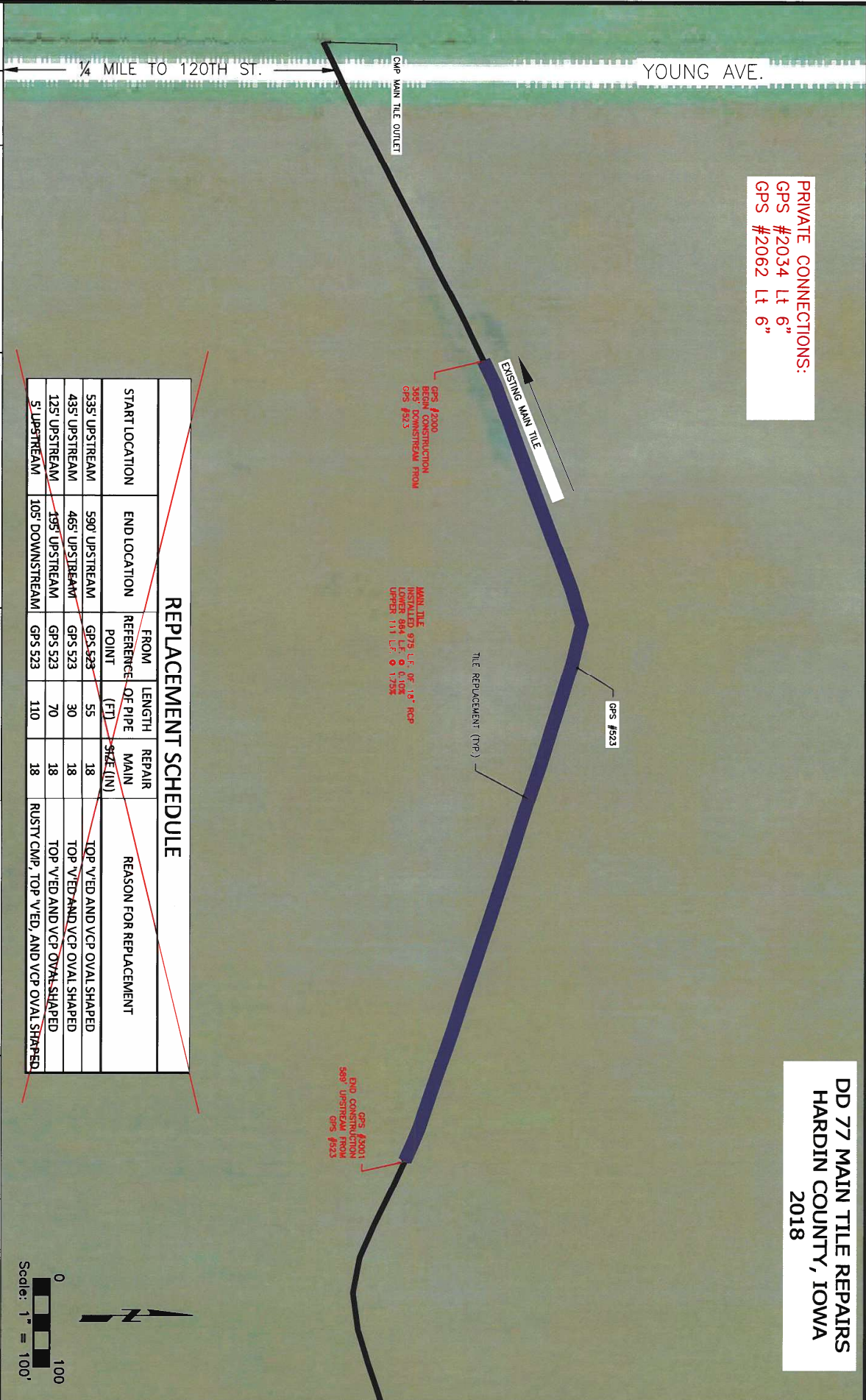


**DD 41 MAIN TILE REPAIRS
HARDIN COUNTY, IOWA
2018**

DATE: 2018-02-13	PROJECT: DD 41 MAIN TILE REPAIRS - ALTERNATE AS BUILT
SCALE: 1" = 60'	
OWNER: HARDIN COUNTY, IOWA	
DESIGNER: CGA	
CONTRACT NO: 1521/2018	
PROJECT NO: 739 PARK AVENUE	
CLIENT: HARDIN COUNTY, IOWA	
DATE: 2018-02-13	
PROJECT: DD 41 MAIN TILE REPAIRS - ALTERNATE AS BUILT	
SCALE: 1" = 60'	
OWNER: HARDIN COUNTY, IOWA	
DESIGNER: CGA	
CONTRACT NO: 1521/2018	
PROJECT NO: 739 PARK AVENUE	
CLIENT: HARDIN COUNTY, IOWA	

**DD 77 MAIN TILE REPAIRS
HARDIN COUNTY, IOWA
2018**

**PRIVATE CONNECTIONS:
GPS #2034 Lt 6"
GPS #2062 Lt 6"**



REPLACEMENT SCHEDULE

START LOCATION	END LOCATION	FROM REFERENCE POINT	LENGTH OF PIPE (FT)	REPAIR MAIN SIZE (IN)	REASON FOR REPLACEMENT
535' UPSTREAM	590' UPSTREAM	GPS 523	55	18	TOP V/ED AND VCP OVAL SHAPED
435' UPSTREAM	465' UPSTREAM	GPS 523	30	18	TOP V/ED AND VCP OVAL SHAPED
125' UPSTREAM	195' UPSTREAM	GPS 523	70	18	TOP V/ED AND VCP OVAL SHAPED
5' UPSTREAM	105' DOWNSTREAM	GPS 523	110	18	RUSTY CMP, TOP V/ED, AND VCP OVAL SHAPED

DRAWN BY: ZJS
 DATE: 2018-02-15
 PROJECT: DD 77 MAIN TILE REPAIRS
 SHEET: 4 OF 9



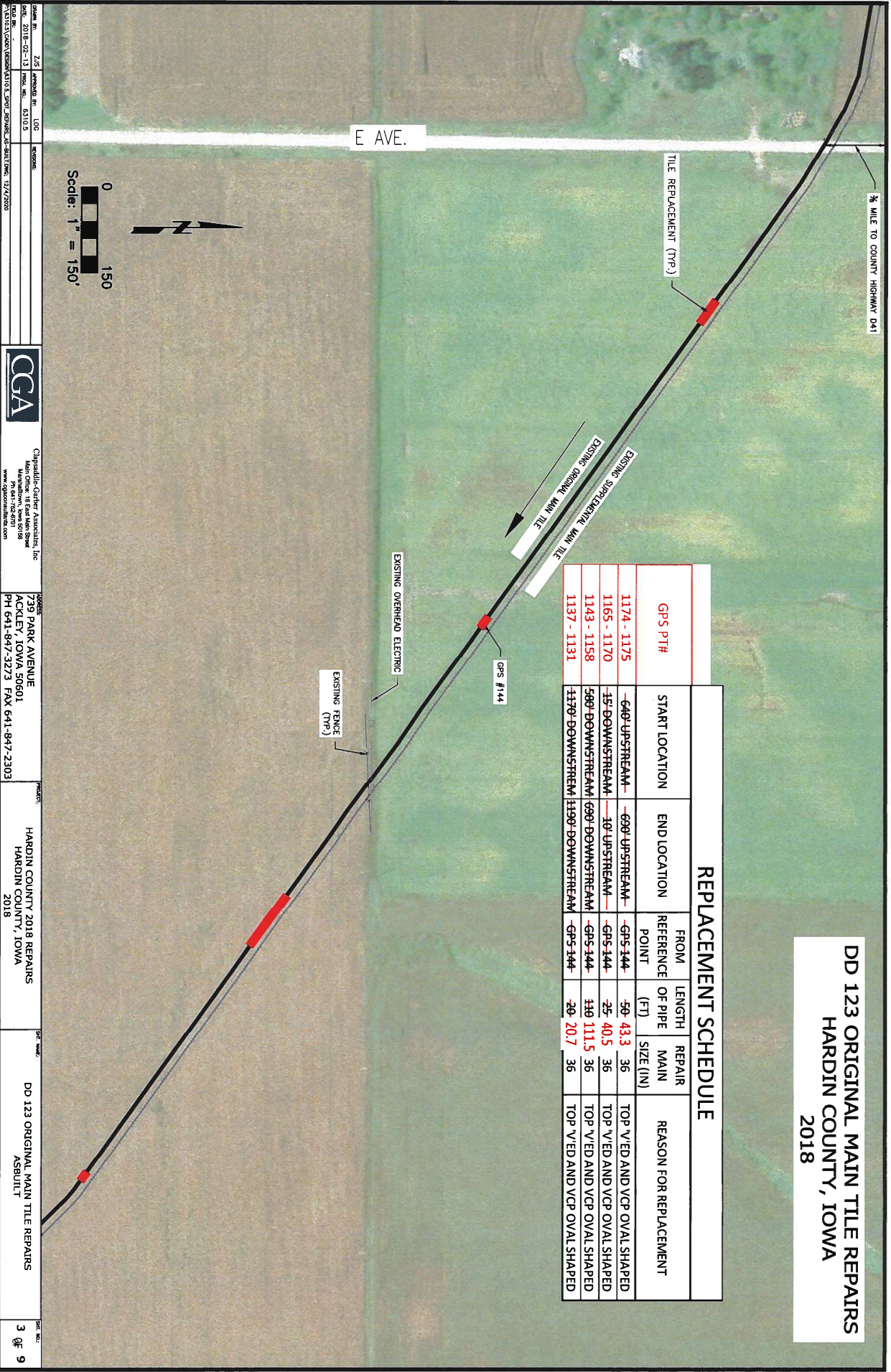
PROJECT: DD 77 MAIN TILE REPAIRS
 HARDIN COUNTY, IOWA
 2018

PROJECT: DD 77 MAIN TILE REPAIRS
 HARDIN COUNTY, IOWA
 2018

PROJECT: DD 77 MAIN TILE REPAIRS
 HARDIN COUNTY, IOWA
 2018

PROJECT: DD 77 MAIN TILE REPAIRS
 HARDIN COUNTY, IOWA
 2018

**DD 123 ORIGINAL MAIN TILE REPAIRS
HARDIN COUNTY, IOWA
2018**



REPLACEMENT SCHEDULE						
GPS PT#	START LOCATION	END LOCATION	FROM REFERENCE POINT	LENGTH OF PIPE (FT)	REPAIR MAIN SIZE (IN)	REASON FOR REPLACEMENT
1174 - 1175	640' UPSTREAM	690' UPSTREAM	GPS 144	50	43.3	TOP V/ED AND VCP OVAL SHAPED
1165 - 1170	15' DOWNSTREAM	10' UPSTREAM	GPS 144	25	40.5	TOP V/ED AND VCP OVAL SHAPED
1143 - 1158	580' DOWNSTREAM	690' DOWNSTREAM	GPS 144	110	111.5	TOP V/ED AND VCP OVAL SHAPED
1137 - 1131	1170' DOWNSTREAM	1190' DOWNSTREAM	GPS 144	20	20.7	TOP V/ED AND VCP OVAL SHAPED

DATE: 2018-02-13	APPROVED BY: LUG	PROJECT: DD 123 ORIGINAL MAIN TILE REPAIRS	SHEET NO.: 3 OF 9
DRAWN BY: JCS	ISSUE NO: 03/10/3	739 PARK AVENUE ACKLEY, IOWA 50601 PH 641-847-3273 FAX 641-847-2303	
		HARDIN COUNTY, IOWA 2018	
Charitable-Garden Associates, Inc. 1700 13th Street Muscatine, Iowa 50600 www.charitable-garden.com			

REPLACEMENT SCHEDULE

START LOCATION	END LOCATION	FROM REFERENCE POINT	LENGTH OF PIPE (FT)	REPAIR MAIN SIZE (IN)	REASON FOR REPLACEMENT
939' UPSTREAM	1131' UPSTREAM	GPS 2021	180	15	SINGLE WALL HDPE IN POOR CONDITION AND COLLAPSING VCP
80' UPSTREAM - DOWNSTREAM	100' UPSTREAM - DOWNSTREAM	GPS 2242	20	18	PARTIALLY COLLAPSED VCP WITH ROCK VISIBLE



**DD 143 MAIN TILE REPAIRS
HARDIN COUNTY, IOWA
2018**

CITY OF RADCLIFFE

DATE: 2018-02-13	FROM: 6/17/12	TO: 6/17/12
DATE: 2018-02-13	FROM: 6/17/12	TO: 6/17/12
DATE: 2018-02-13	FROM: 6/17/12	TO: 6/17/12

Charadler-Gardner Associates, Inc.
 739 Park Avenue
 Ackley, Iowa 50601
 PH 641-847-3273 FAX 641-847-2303

739 PARK AVENUE
 ACKLEY, IOWA 50601
 PH 641-847-3273 FAX 641-847-2303

HARDIN COUNTY 2018 REPAIRS
 HARDIN COUNTY, IOWA
 2018

DD 143 MAIN TILE REPAIRS
 AS BUILT



PAY ESTIMATE NO. 6 (FINAL EXCEPT DD 128)

Repairs To Big 4, DD 41, 77, 123, 128, and 143

PROJECT NUMBER 6771.2

12/3/2020

CONTRACTOR

Hands On Excavating, LLC
3305 Ziegler Ave.
Radcliffe, Iowa 50230

OWNER

Hardin County Trustees
1215 Edgington Ave., Ste 1
Eldora, Iowa 50627

ENGINEER

Clapsaddle-Garber Associates
739 Park Avenue
Ackley, Iowa 50601

BIG 4 DIVISION BID ITEMS

<u>Item No.</u>	<u>Description</u>	<u>Estimated Quantity</u>	<u>Unit</u>	<u>Installed Quantity</u>	<u>Unit Price</u>	<u>Extended Price</u>
1	Main Open Ditch Slough Grading	0.2	AC	0.2	\$ 6,800.00	\$ 1,360.00
2	Main Open Ditch Bank Grading	80	LF	80	\$ 19.25	\$ 1,540.00
3	Surface Drain Cleanout	3	EA	3	\$ 800.00	\$ 2,400.00
4	Surface Drain Inlet Grading	3	LOC	3	\$ 320.00	\$ 960.00
5	Riprap	380	TN	363.3	\$ 38.46	\$ 13,972.52
6	Surface Drain (36")	40	LF	80	\$ 87.50	\$ 7,000.00
7	Surface Drain Removal	1	LOC	1	\$ 850.00	\$ 850.00
8	Permanent Seeding	0.5	AC	1	\$ 2,556.00	\$ 2,556.00
9	Seeding Warranty	1	LS	2	\$ 750.00	\$ 1,500.00

DD 41 DIVISION ALTERNATE BID

101AL	24" Ø CMP Tile Outlet	40	LF	40	\$ 62.75	\$ 2,510.00
102AL	18" Ø RCP Tile	320	LF	336	\$ 52.81	\$ 17,744.16
103AL	Type PC-2 Concrete Collar	6	EA	8	\$ 350.00	\$ 2,800.00
104AL	Private Tile Connection	2	EA	4	\$ 250.00	\$ 1,000.00
105AL	Fence Removal and Replacement	1	LS	1	\$ 500.00	\$ 500.00
106AL	Tree Removal	1	LS	1	\$ 300.00	\$ 300.00
107AL	Tile Removal	360	LF	376	\$ 2.00	\$ 752.00
108AL	Riprap	50	TN	43.52	\$ 45.11	\$ 1,963.19
109AL	Permanent Seeding	0.3	AC	0.04	\$ 1,500.00	\$ 60.00
110AL	Seeding Warranty	1	LS	1	\$ 500.00	\$ 500.00

DD 77 DIVISION BID

*201rev	18" Ø RCP Tile	970	LF	975	\$ 48.79	\$ 47,570.25
*202rev	Type PC-2 Concrete Collar	2	EA	2	\$ 350.00	\$ 700.00
*203rev	Private Tile Connection	4	EA	2	\$ 250.00	\$ 500.00
*204rev	Tile Removal (Crush in-place)	860	LF	860	\$ 1.00	\$ 860.00
*205rev	Tile Removal (Offsite Disposal)	110	LF	110	\$ 1.00	\$ 110.00

DD 123 DIVISION BID

301	36" Ø RCP Tile	205	LF	216	\$ 92.20	\$ 19,915.20
302	Type PC-2 Concrete Collar	8	EA	8	\$ 350.00	\$ 2,800.00
303	Tile Removal	205	LF	216	\$ 5.00	\$ 1,080.00



DD 128 DIVISION BID

**401	8" Ø HDPE FLEX Dual Wall Tile w/o Rock Bedding	985	LF	852	\$ 10.01	\$ 8,528.52
402	8" Ø HDPE Dual Wall Wyc	1	EA	1	\$ 60.00	\$ 60.00
403	8" Ø x 22½" HDPE Dual Wall Bend	1	FA		\$ 40.00	\$ -
404	Type PC-2 Concrete Collar	2	EA	2	\$ 350.00	\$ 700.00
405	Private Tile Connection	3	EA	3	\$ 350.00	\$ 1,050.00
406	15" Ø Hickenbottom Intake	1	EA	1	\$ 650.00	\$ 650.00
407	8" Ø Hickenbottom Intake	1	EA	1	\$ 150.00	\$ 150.00
408	Top Soil Salvage, Stockpile, and Respread	1	LS	0.4	\$ 3,200.00	\$ 1,280.00
409	Channel Grading (Fill and Borrow)	12	STA	6.667	\$ 450.00	\$ 3,000.00
410	Debris, Junk, and Rubble Removal	12	STA	12	\$ 200.00	\$ 2,400.00
411	Intake Removal	1	EA		\$ 300.00	\$ -
412	Tile Removal	20	LF	20	\$ 5.00	\$ 100.00
413	Tree Removal	12	STA	7	\$ 400.00	\$ 2,800.00
414	Permanent Seeding	0.9	AC		\$ 1,500.00	\$ -
415	Seeding Warranty	1	LS		\$ 500.00	\$ -

DD 143 DIVISION BASE BID

501	18" Ø RCP Tile	20	LF	20	\$ 56.32	\$ 1,126.40
502	15" Ø RCP Tile	180	LF	192	\$ 33.75	\$ 6,480.00
503	Type PC-2 Concrete Collar	4	EA	4	\$ 350.00	\$ 1,400.00
504	Private Tile Connection	3	EA		\$ 350.00	\$ -
505	6" ACC Pavement	120	SY	33.33	\$ 90.70	\$ 3,023.03
506	Pavement Removal	120	SY	33.33	\$ 3.84	\$ 127.99
507	Tile Removal	200	LF	212	\$ 2.00	\$ 424.00
508	Tree Removal	1	LS	1	\$ 200.00	\$ 200.00
509	Permanent Seeding	0.2	AC	0.15	\$ 1,500.00	\$ 225.00
510	Seeding Warranty	1	LS	1	\$ 1,062.50	\$ 1,062.50
511	Traffic Control	1	LS	1	\$ 200.00	\$ 200.00

I have reviewed the work claimed to be completed by the Contractor as reflected above and recommend payment of

\$ 15,266.03

to the Contractor

Lee Gallentine, Project Engineer

TOTAL WORK COMPLETED TO DATE	\$ 168,790.75
10% RETENTION	\$ 2,071.85
AMOUNT DUE LESS RETENTION	\$ 166,718.90
PREVIOUSLY PAID	\$ 151,452.87
AMOUNT DUE AT THIS TIME	\$ 15,266.03

Jacob W. Binkhaber for Binkhaber On Excavating LLC
Contractor

- * - Approved as part of Change Order #1
- ** - Approved as part of Change Order #3

Note: For pay estimate #1, \$25,262.41 was for DD 41, \$44,996.67 was for DD 77, and \$7,734.66 was for DD 143.
 For pay estimate #2, \$21,678.12 was for DD 123.
 For pay estimate #3, \$28,924.66 was for Big 4.
 For pay estimate #4, \$11,824.67 was for DD 128.
 For pay estimate #5, \$6,822.00 was for DD 128 and \$4,209.68 was for DD 143.
For pay estimate #6, \$2,324.59 was for DD 143, \$2,117.08 was for DD 123, \$4,743.58 was for DD 77, \$2,866.93 was for DD 41, and \$3,213.85 was for Big 4.

